



**Our team is pleased to be now Representing in all ASIAN MARKETS**

## **NOVATEL MELBOURNE Glen Waverly**

### **Accommodation**

- 200 accommodation rooms – large capacity for twin groups
- All rooms will be subject to availability.
- **'Starting From' rate of \$159 BBT,**
- **FOC policy = 1 FOC per 10 paid rooms (11<sup>th</sup> FOC)**

### **Bookings**

**Contact Matt: [Bookings@discoverjervisbay.com.au](mailto:Bookings@discoverjervisbay.com.au)**

**I will direct and support your enquiry to General Manager of hotel and our team.**



### **Location**

Ideal location for quick access to

1. Melbourne CBD
2. Yarra Valley
3. Phillip Island

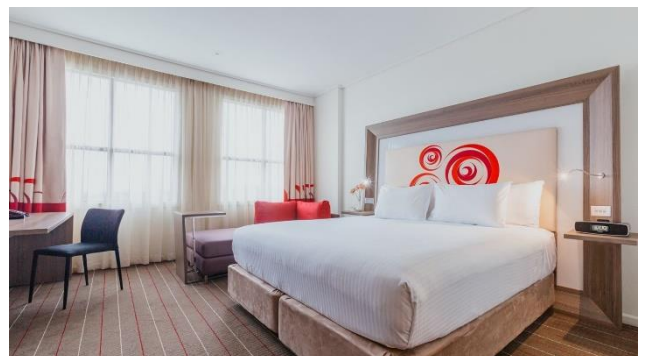
ADDRESS: 285 Springvale Road Glen Waverley, Victoria Australia 3150



**Note Special: We welcome group lunches and or dinner on route to or from Phillip Island or Yarra Valley for NON HOTEL Groups!!**

### **Hotel Facilities**

- Heated Indoor Pool
- Sauna
- 24hr Gym
- 24hr Reception
- Coach Pickup/Drop Off available at Hotel Driveway. Overnight parking available at front of hotel



## Food & Beverage

- Meze Restaurant & Bar/Functions – offering breakfast/lunch/dinner and room service



## Incentive Groups

- Mice and Incentive groups catered for all events.



## HOW TO BOOK – NOVATEL MELBOURNE Glen Waverly

Contact Matt: [Bookings@discoverjervisbay.com.au](mailto:Bookings@discoverjervisbay.com.au)

I will introduce your company and direct and support your enquiry to General Manager of hotel and our team.

